

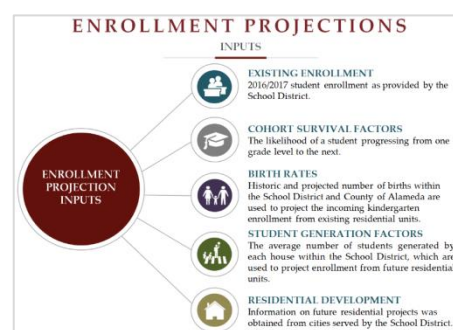


October 26, 2017

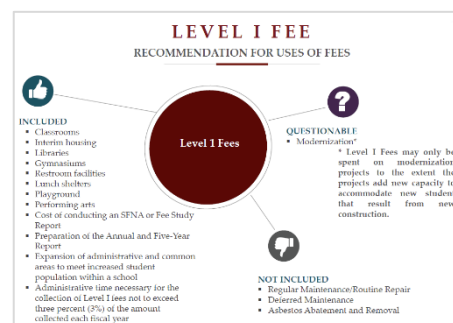
CS NEWSFLASH: YEAR-END PLANNING REMINDERS

With the year quickly coming to an end, now is a great time to start thinking about how to get a head start on planning for 2018 by kicking off the following studies before you leave for winter break:

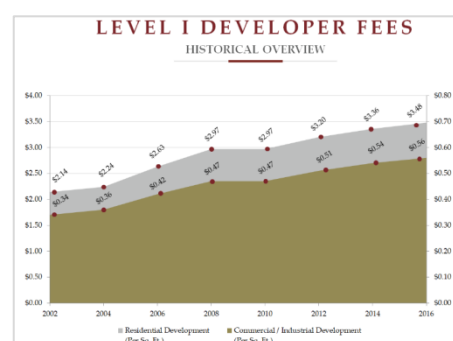
Enrollment Projections: Fall enrollment counts are being finalized, which means beginning an enrollment study now will allow you to use the most up-to-date student data for your projections. Enrollment projections are a great tool for tough planning decisions concerning budgeting, staffing, and facilities projects. Keep an eye out in the coming weeks for a White Paper to be released by Cooperative Strategies regarding the increased competition for enrollment between public school districts and alternative educational institutions (i.e. charters).



Developer Fee Justification Studies: The State Allocation Board approves new maximum residential and commercial ("Level I") developer fee rates in January 2018. Getting started with the justification process now means your Board will be prepared to adopt your school district's newly justified rates in conjunction with the State Allocation Board's announcement. Keep in mind that a 60-day waiting period follows Board adoption, so delaying the start of your study will push the date you can start collecting the new fees farther out.



Annual & Five-Year Reports: School districts that collect developer fees need to complete an annual accounting of all funds collected along with any associated expenditures of those funds. This document needs to be made available to the public within 180 days after the end of the fiscal year. The report then needs to be adopted by your Board after a 15-day public review period.



If you need assistance with any of these reports, please contact us today at 949.250.8367 or info@coopstrategies.com.

Cooperative Strategies, LLC